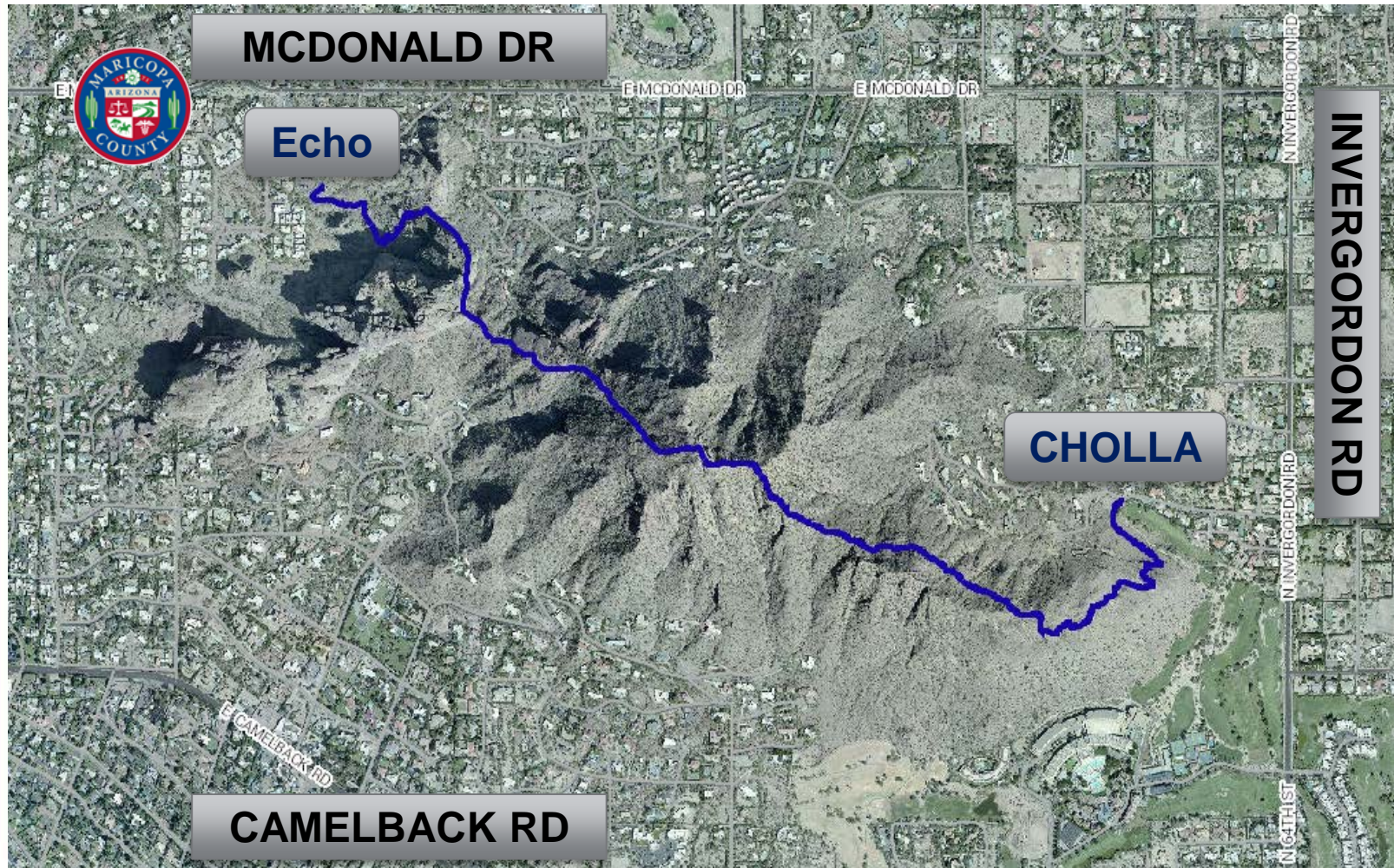


# **Cholla Trail Feasibility Study**

**Arcadia Camelback Mountain  
Neighborhood Association Board Meeting  
March 2, 2019**



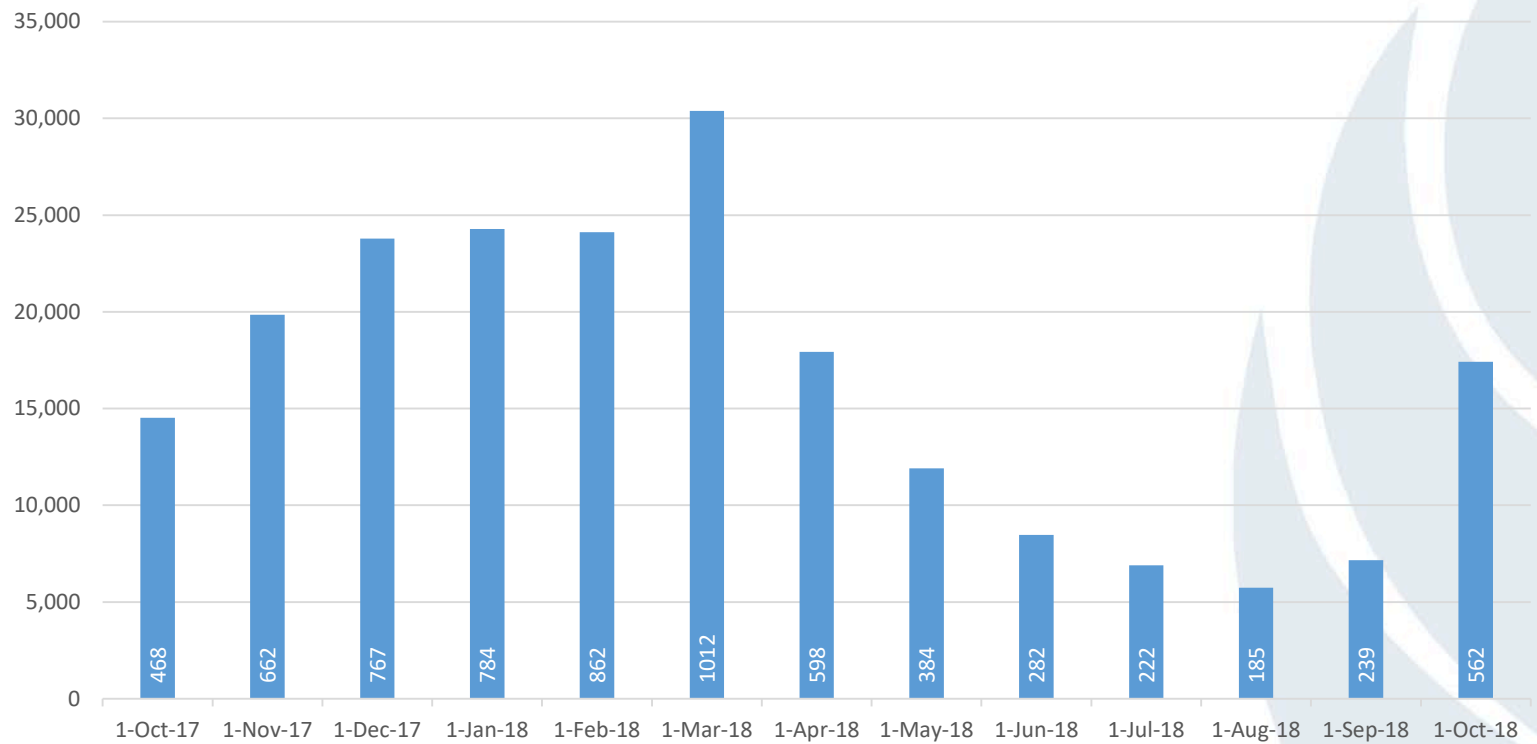
# Camelback Mountain (Echo and Cholla Trail Alignment)





# Cholla Trail Use

Cholla Trail Monthly Usage with Average Daily Users inset







# Demand Creates Challenges

- Foot traffic
- Vehicular traffic
- Associated behavior





# Community Direction and Input

Item	Community Comment	Action
Street Parking on Invergordon (COP/PV)	Sign all non parking consistently	New signs, red curb, white hash marks
Pedestrian and vehicle hiker traffic on Cholla Lane	High traffic and unsafe to drive Cholla Lane	Improved walking path and additional signs
Street Maintenance (COP/PV)	Improve non parking designation areas	May 31 – June 1 Slurry, seal & stripe
Park Ranger Presence	Park Ranger posted on Cholla Lane/Trail	Daily
Police Enforcement (COP/PV)	Enforcement needs to happen daily	COP/PV continue to enforce/cite as possible

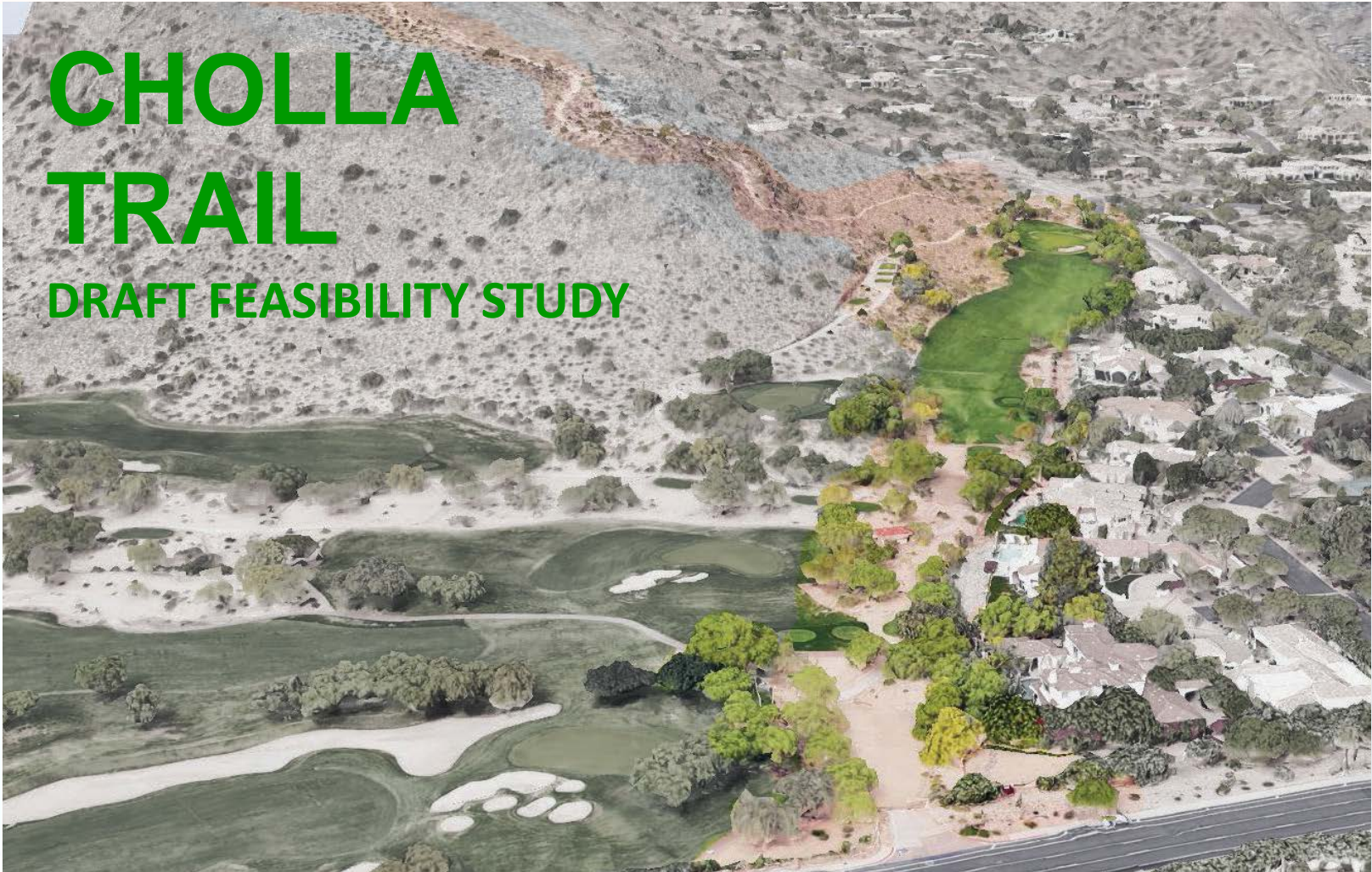






# Cholla Trail Feasibility Study

## CHOLLA TRAIL DRAFT FEASIBILITY STUDY





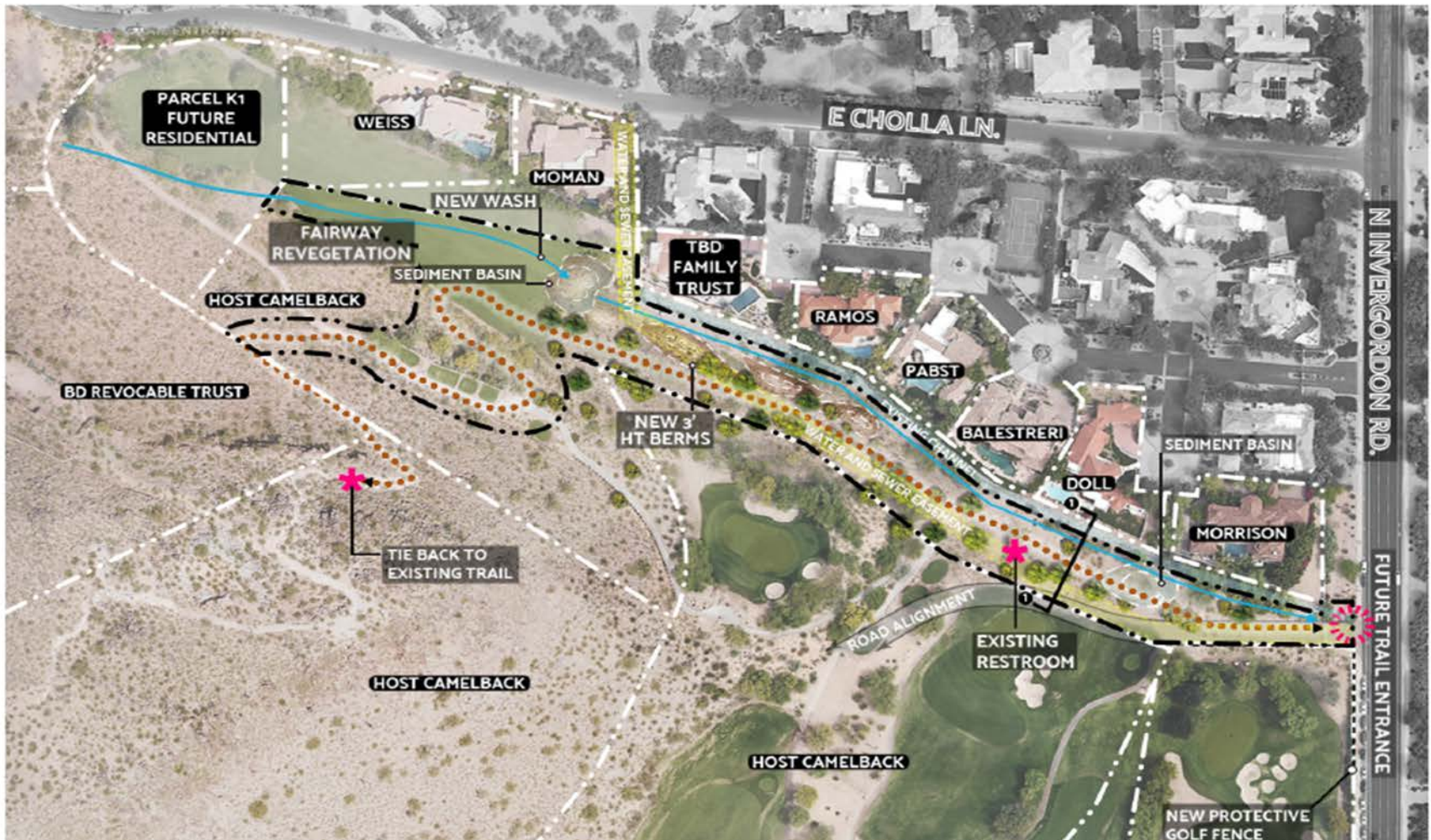


# Dig Studio

## Trail Map Options

### CHOLLA TRAIL

TRAIL MAP- OPTION 4



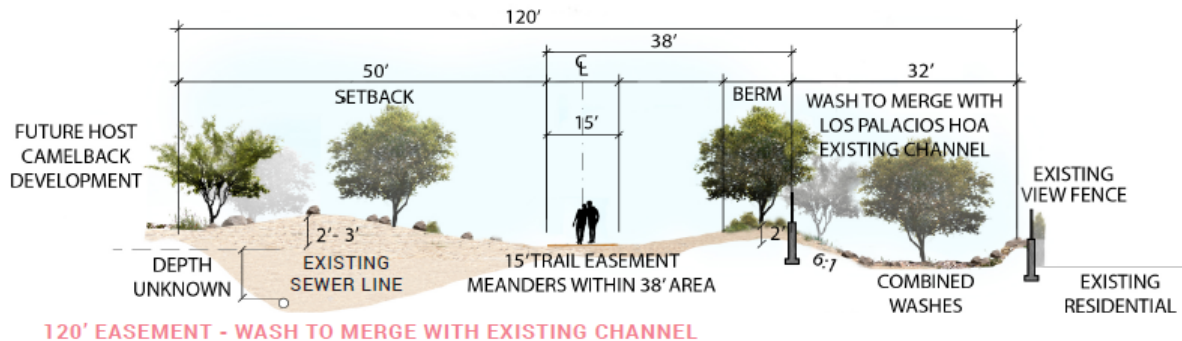


# Dig Studio

## Trail Map Options

### CHOLLA TRAIL

#### TRAIL MAP - OPTION 4 - COMBINED WASHES



120' EASEMENT - WASH TO MERGE WITH EXISTING CHANNEL

#### OPTION 4 (COMBINED WASHES)

##### NOTES:

1. NEW WASH TO BE COMBINED WITH EXISTING LOS PALACIOS HOA CHANNEL, 32' CHANNEL TO CONTAIN FULL BREAKOUT FLOW.
2. NEW WASH PROVIDES DRAINAGE PROTECTION FOR WEISS, MOMAN AND TB FAMILY TRUST PROPERTIES.
3. EXISTING BERMS REMOVED ALONG MORRISON, DOLL, BALESTRERI PROPERTIES FOR MEANDERING TRAIL ALONG 38' AREA.
4. SOLID WALL ADDED ALONG LOS PALACIOS HOA CHANNEL FOR PRIVACY.
5. NEW BERMS ADDED ALONG PABST, RAMOS AND TBD TRUST PROPERTIES.
6. 50' TRAIL SETBACK FROM FUTURE HOST CAMELBACK DEVELOPMENT AND 32' SETBACK FROM NEW COMBINED CHANNEL.
7. 15' TRAIL MEANDERS BETWEEN NEW COMBINED WASH AND 50' SETBACK.
8. EXISTING TRAIL IS REALIGNED TO REMOVE IT FROM PARCEL K1.
9. EXISTING RESTROOM REMAINS IN CURRENT LOCATION.
10. TRAIL LOCATION MAY REQUIRE A PROTECTIVE NET BETWEEN GOLF GREEN AND TRAIL.





# Proposal Process

- In April 2018 as part of community outreach effort Park Supervisor Covey presented to the Board of Arcadia Camelback Mountain Neighborhood Association (ACMNA)
- Over the next few months met with nearby homeowners, Council District 6, and departmental City staff to gather information from stakeholders



# Proposal Process

- In July 2018 presented as an information item to the Phoenix Sonoran Preserve and Mountain Parks/Preserves Committee Board Meeting for their review and comment
- In September stakeholders met with Dig Studio to review the draft of the Feasibility plan





# Proposal Process

- In August 2018 returned as an approval item to the Phoenix Sonoran Preserve and Mountain Parks /Preserves Committee Board Meeting and received their support
- Feasibility Study draft presented to Parks Board on November 15, 2018



# Proposal Process

- In January 2019 The Cholla Feasibility Plan draft was approved by the Phoenix City Council's Parks, Arts, Libraries, and Education Subcommittee
- In February 2019 met with stakeholders regarding funding and timeline for the project